



Palisades Portfolio of Plans

Explore our curated collection of home plans thoughtfully designed for the Palisades community. Each plan offers a range of distinctive elevations and color schemes to suit a variety of styles and preferences.

For additional details on available color schemes and elevation options, please don't hesitate to reach out.



THE CENTINELA COLLECTION

Build a new home on your existing homesite with our
exclusively designed Centinela Collection.



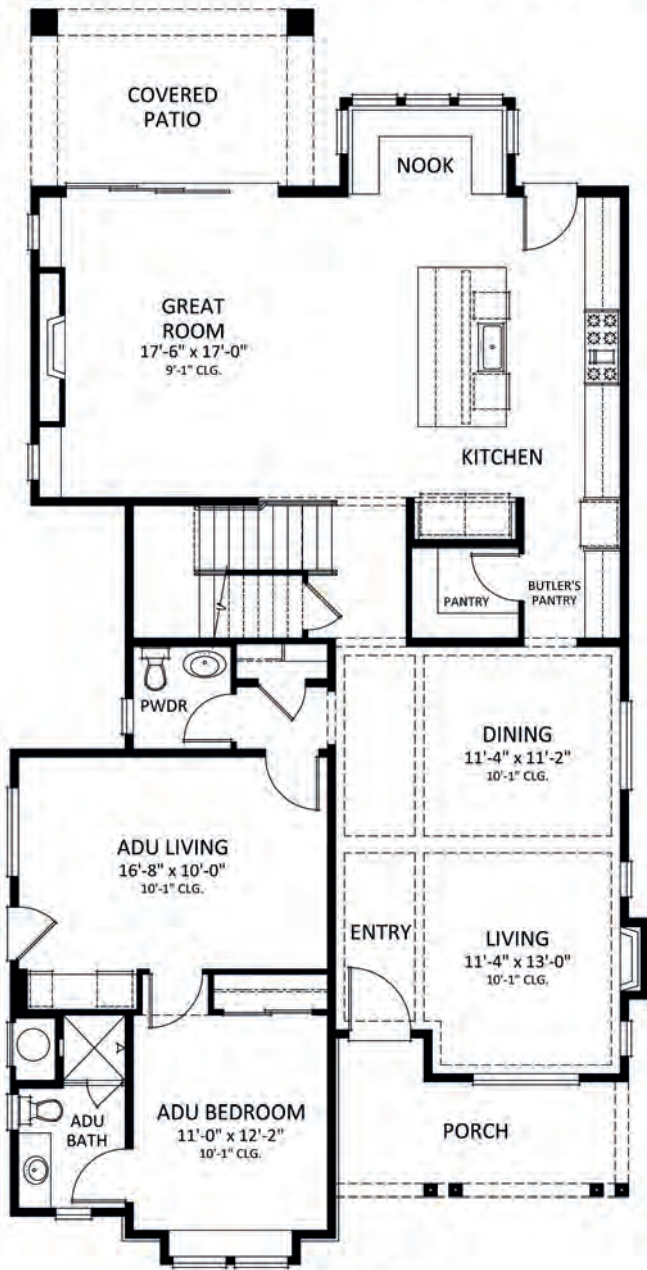
COASTAL ELEVATION

PRELIMINARY

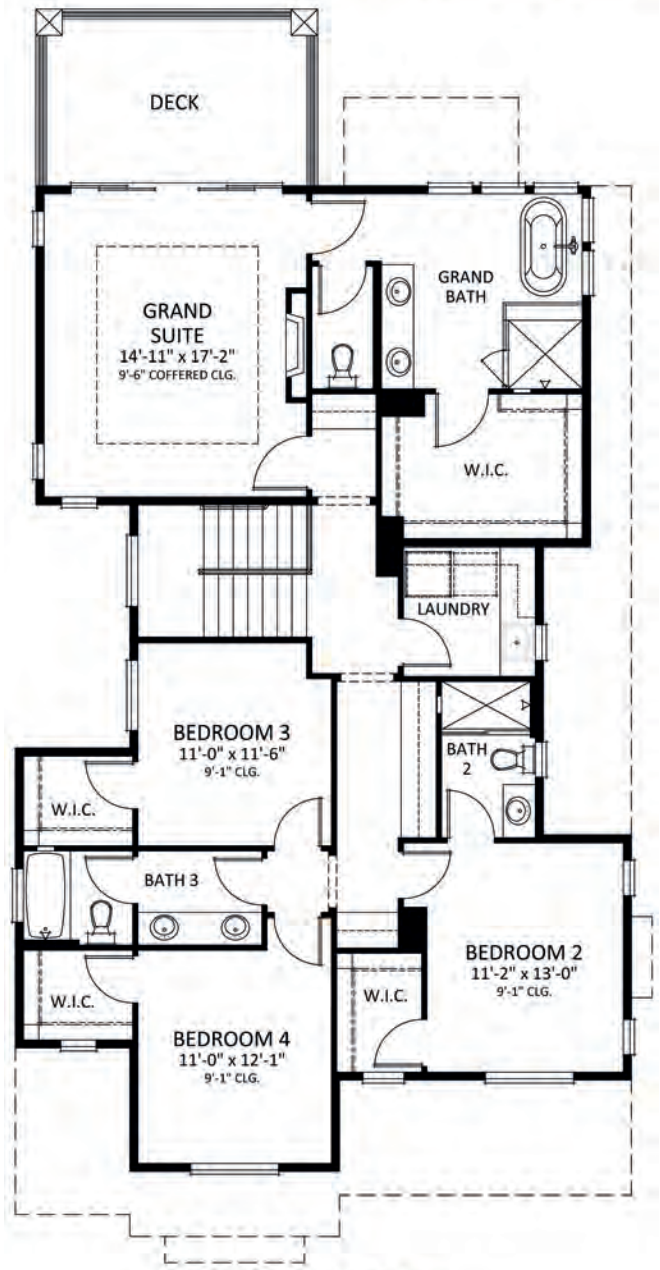
Southern California | tjh.com/build | [@thomasjameshomes](https://www.instagram.com/thomasjameshomes)

Home, pricing, and community information is subject to change, on homes prior to sale, at any time without notice or obligation. Completion dates are subject to final permits being received. Square footage and dimensions are approximate and may vary in construction and depending on the standard of measurement used, engineering and municipal requirements, or other site-specific conditions. Not an offer or solicitation to sell real property. Thomas James Homes is a registered trademark of Thomas James Homes, LLC. ©2023 Thomas James Homes. All rights reserved. CA DRE License #02057367.





FIRST FLOOR



SECOND FLOOR



BED
4



BATH
4.5



SQFT
3,374



LOT SIZE
47.5'+

*CORNER LOTS ONLY



SALE PRICE
UPON REQUEST

PRELIMINARY

Southern California | tjh.com/build | [@thomasjameshomes](https://www.instagram.com/thomasjameshomes)

Home, pricing, and community information is subject to change, on homes prior to sale, at any time without notice or obligation. Completion dates are subject to final permits being received. Square footage and dimensions are approximate and may vary in construction and depending on the standard of measurement used, engineering and municipal requirements, or other site-specific conditions. Not an offer or solicitation to sell real property. Thomas James Homes is a registered trademark of Thomas James Homes, LLC. ©2023 Thomas James Homes. All rights reserved. CA DRE License #02057367.





THE WILLOW COLLECTION

Build a new home on your existing homesite with our
exclusively designed Willow Collection.



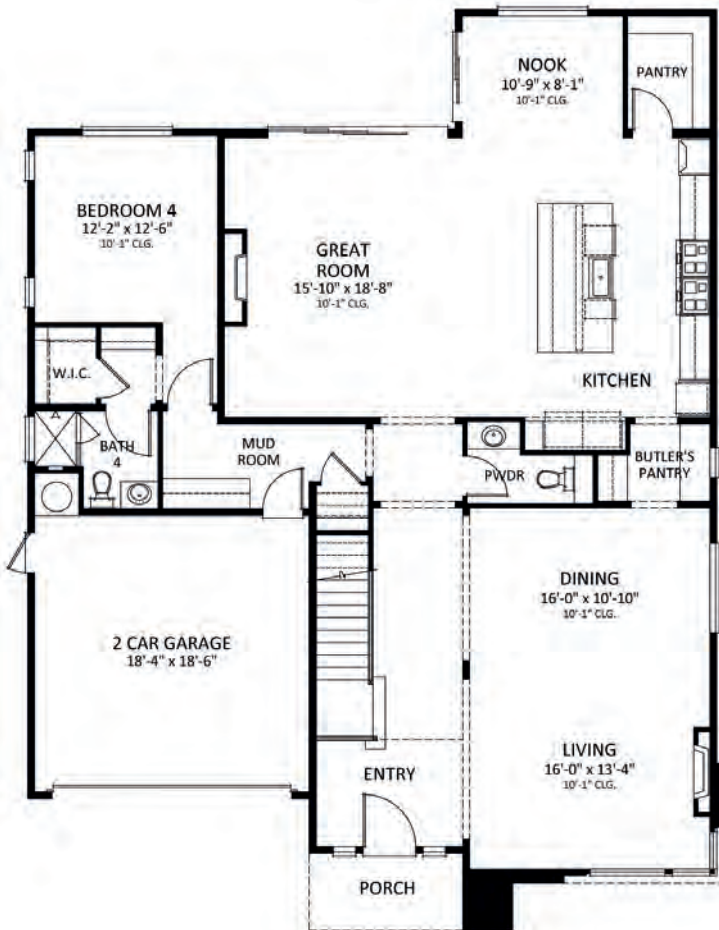
FARMHOUSE ELEVATION

PRELIMINARY

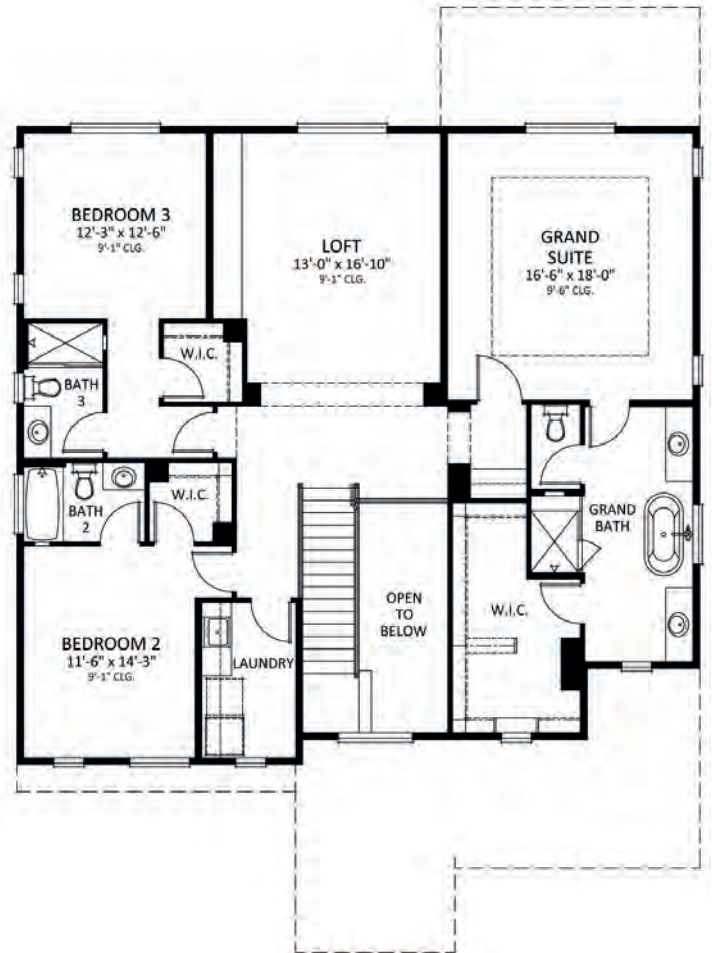
Southern California | tjh.com/build | [@thomasjameshomes](https://www.instagram.com/thomasjameshomes)

Home, pricing, and community information is subject to change, on homes prior to sale, at any time without notice or obligation. Completion dates are subject to final permits being received. Square footage and dimensions are approximate and may vary in construction and depending on the standard of measurement used, engineering and municipal requirements, or other site-specific conditions. Not an offer or solicitation to sell real property. Thomas James Homes is a registered trademark of Thomas James Homes, LLC. ©2023 Thomas James Homes. All rights reserved. CA DRE License #02057367.





FIRST FLOOR



SECOND FLOOR



BED
4



BATH
4.5



SQFT
3,698



LOT SIZE
60' +



SALE PRICE
UPON REQUEST

PRELIMINARY

Southern California | tjh.com/build | [@thomasjameshomes](https://www.instagram.com/thomasjameshomes)

Home, pricing, and community information is subject to change, on homes prior to sale, at any time without notice or obligation. Completion dates are subject to final permits being received. Square footage and dimensions are approximate and may vary in construction and depending on the standard of measurement used, engineering and municipal requirements, or other site-specific conditions. Not an offer or solicitation to sell real property. Thomas James Homes is a registered trademark of Thomas James Homes, LLC. ©2023 Thomas James Homes. All rights reserved. CA DRE License #02057367.





THE PONDEROSA COLLECTION

Build a new home on your existing homesite with our
exclusively designed Ponderosa Collection.



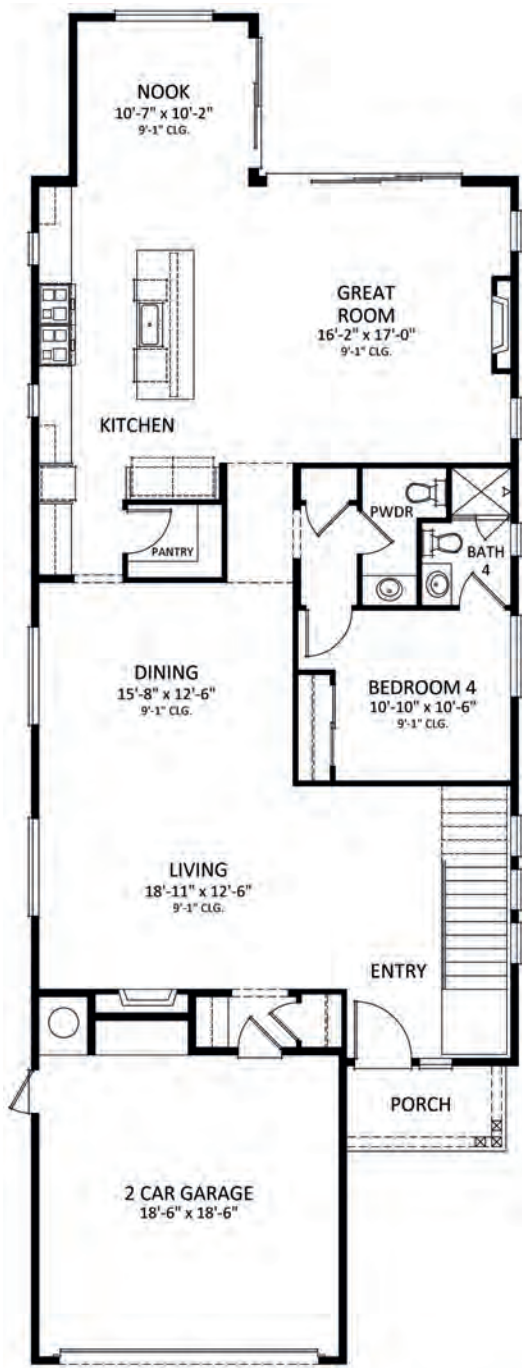
TRADITIONAL ELEVATION

PRELIMINARY

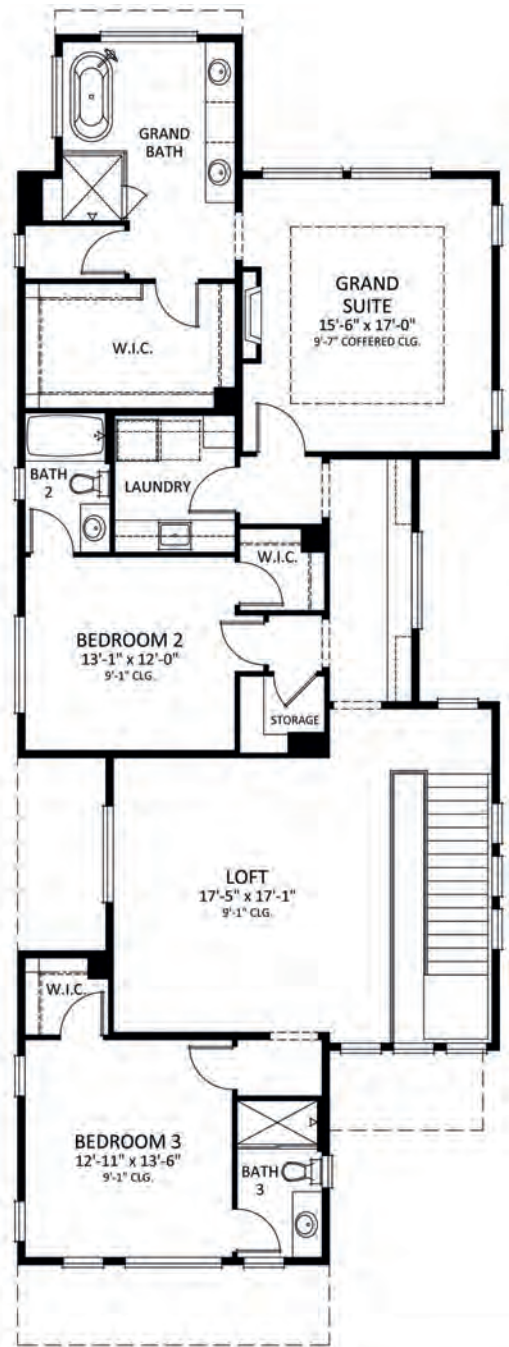
Southern California | tjh.com/build | [@thomasjameshomes](https://www.instagram.com/thomasjameshomes)

Home, pricing, and community information is subject to change, on homes prior to sale, at any time without notice or obligation. Completion dates are subject to final permits being received. Square footage and dimensions are approximate and may vary in construction and depending on the standard of measurement used, engineering and municipal requirements, or other site-specific conditions. Not an offer or solicitation to sell real property. Thomas James Homes is a registered trademark of Thomas James Homes, LLC. ©2023 Thomas James Homes. All rights reserved. CA DRE License #02057367.





FIRST FLOOR



SECOND FLOOR



BED

4



BATH

4



SQFT

3,461



LOT SIZE

40' +



SALE PRICE

UPON REQUEST

PRELIMINARY

Southern California | tjh.com/build | [@thomasjameshomes](https://twitter.com/thomasjameshomes)

Home, pricing, and community information is subject to change, on homes prior to sale, at any time without notice or obligation. Completion dates are subject to final permits being received. Square footage and dimensions are approximate and may vary in construction and depending on the standard of measurement used, engineering and municipal requirements, or other site-specific conditions. Not an offer or solicitation to sell real property. Thomas James Homes is a registered trademark of Thomas James Homes, LLC. ©2023 Thomas James Homes. All rights reserved. CA DRE License #02057367.





THE PONDEROSA COLLECTION

Build a new home on your existing homesite with our
exclusively designed Ponderosa Collection.



COASTAL ELEVATION

PRELIMINARY

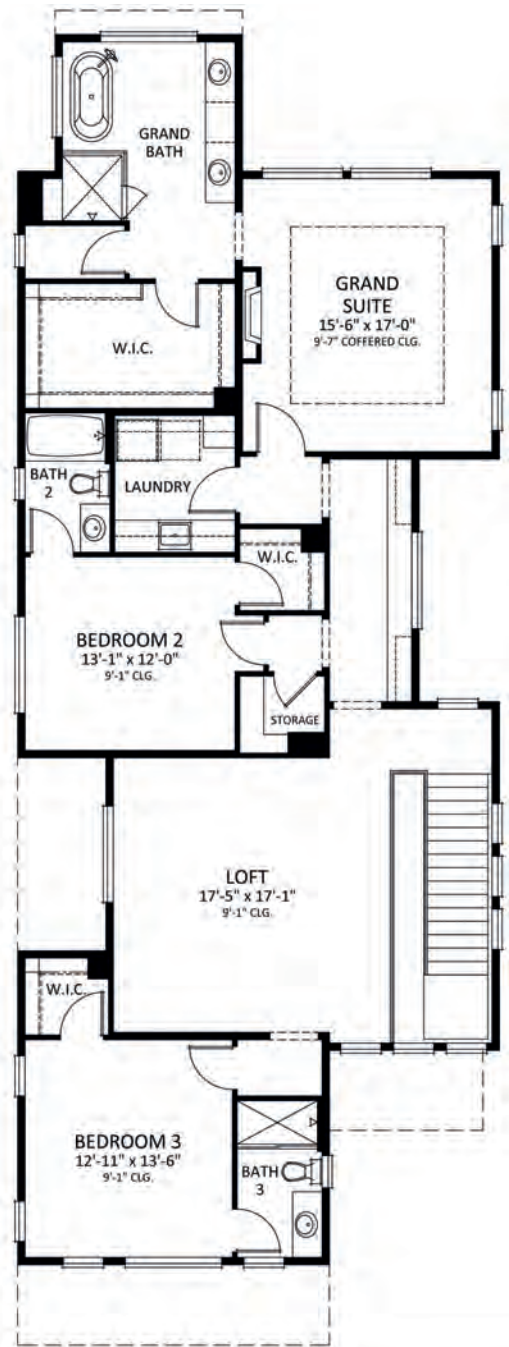
Southern California | tjh.com/build | [@thomasjameshomes](https://www.instagram.com/thomasjameshomes)

Home, pricing, and community information is subject to change, on homes prior to sale, at any time without notice or obligation. Completion dates are subject to final permits being received. Square footage and dimensions are approximate and may vary in construction and depending on the standard of measurement used, engineering and municipal requirements, or other site-specific conditions. Not an offer or solicitation to sell real property. Thomas James Homes is a registered trademark of Thomas James Homes, LLC. ©2023 Thomas James Homes. All rights reserved. CA DRE License #02057367.





FIRST FLOOR



SECOND FLOOR



BED

4



BATH

4



SQFT

3,461



LOT SIZE

40' +



SALE PRICE

UPON REQUEST

PRELIMINARY

Southern California | tjh.com/build | [@thomasjameshomes](https://twitter.com/thomasjameshomes)

Home, pricing, and community information is subject to change, on homes prior to sale, at any time without notice or obligation. Completion dates are subject to final permits being received. Square footage and dimensions are approximate and may vary in construction and depending on the standard of measurement used, engineering and municipal requirements, or other site-specific conditions. Not an offer or solicitation to sell real property. Thomas James Homes is a registered trademark of Thomas James Homes, LLC. ©2023 Thomas James Homes. All rights reserved. CA DRE License #02057367.





THE PONDEROSA COLLECTION

Build a new home on your existing homesite with our
exclusively designed Ponderosa Collection.



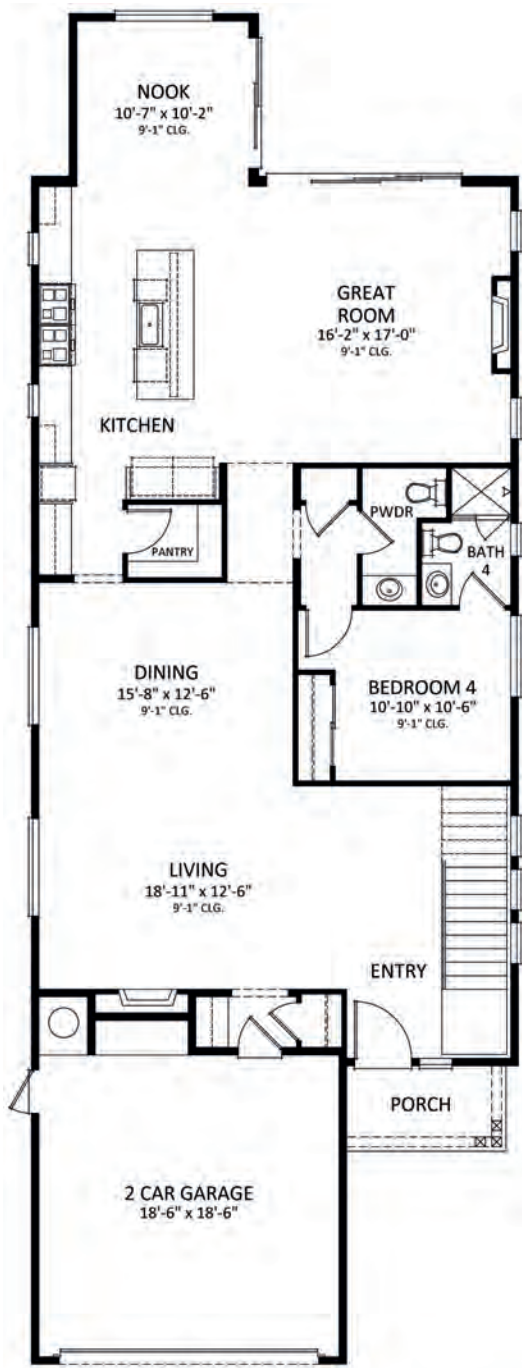
TRANSITIONAL ELEVATION

PRELIMINARY

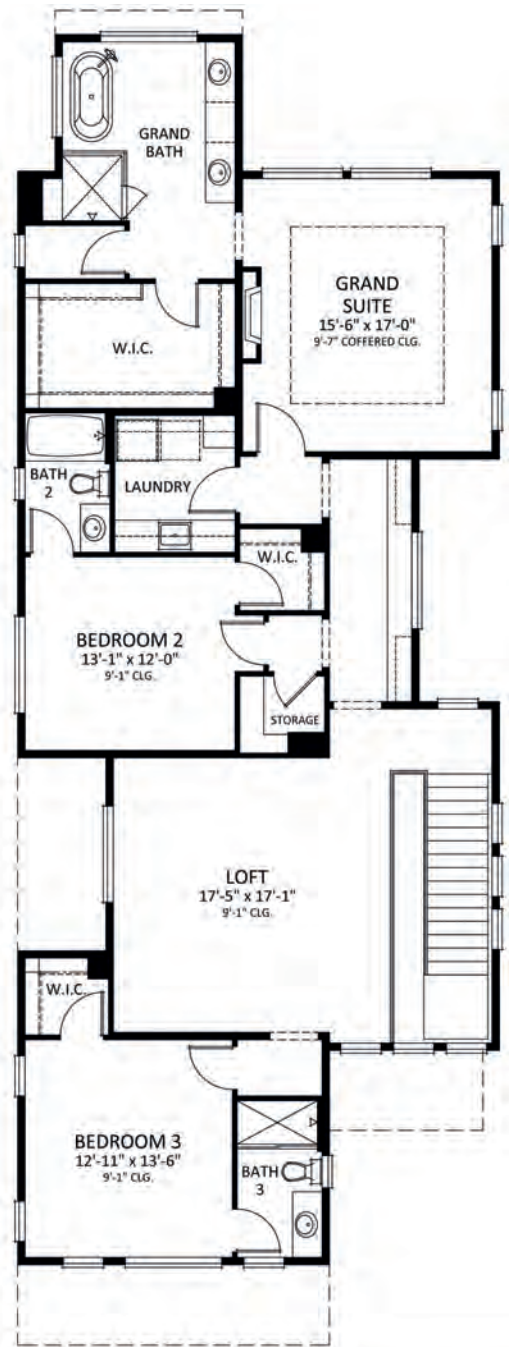
Southern California | tjh.com/build | [@thomasjameshomes](https://www.instagram.com/thomasjameshomes)

Home, pricing, and community information is subject to change, on homes prior to sale, at any time without notice or obligation. Completion dates are subject to final permits being received. Square footage and dimensions are approximate and may vary in construction and depending on the standard of measurement used, engineering and municipal requirements, or other site-specific conditions. Not an offer or solicitation to sell real property. Thomas James Homes is a registered trademark of Thomas James Homes, LLC. ©2023 Thomas James Homes. All rights reserved. CA DRE License #02057367.





FIRST FLOOR



SECOND FLOOR



BED
4



BATH
4



SQFT
3,461



LOT SIZE
40' +



SALE PRICE
UPON REQUEST

PRELIMINARY

Southern California | tjh.com/build | [@thomasjameshomes](https://twitter.com/thomasjameshomes)

Home, pricing, and community information is subject to change, on homes prior to sale, at any time without notice or obligation. Completion dates are subject to final permits being received. Square footage and dimensions are approximate and may vary in construction and depending on the standard of measurement used, engineering and municipal requirements, or other site-specific conditions. Not an offer or solicitation to sell real property. Thomas James Homes is a registered trademark of Thomas James Homes, LLC. ©2023 Thomas James Homes. All rights reserved. CA DRE License #02057367.





THE PALISADE COLLECTION

Build a new home on your existing homesite with our
exclusively designed Palisade Collection.



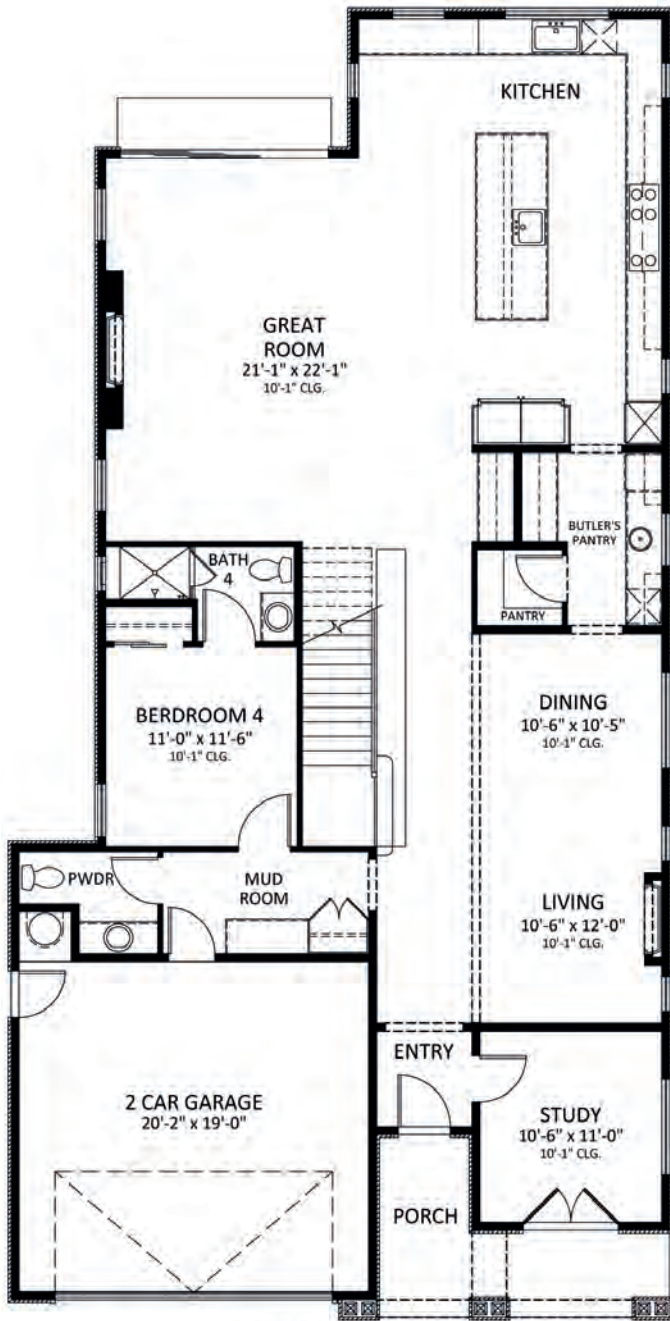
TRADITIONAL ELEVATION

PRELIMINARY

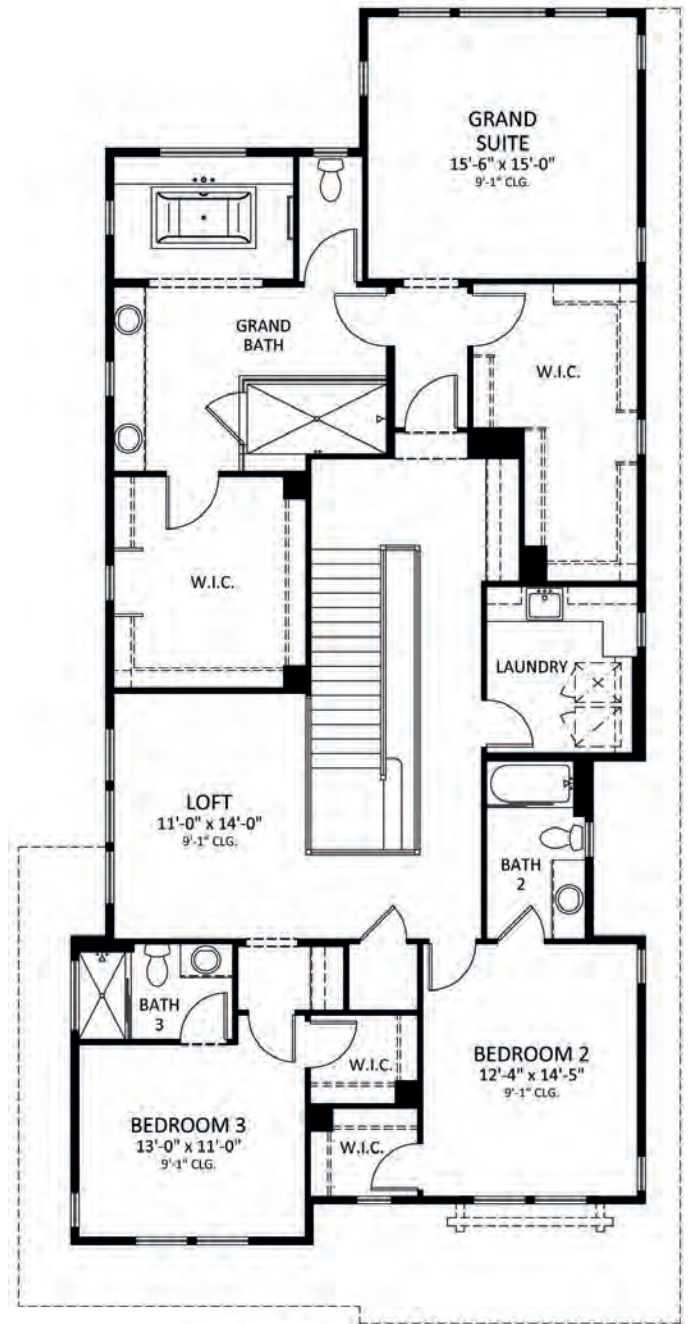
Southern California | tjh.com/build | [@thomasjameshomes](https://www.instagram.com/thomasjameshomes)

Home, pricing, and community information is subject to change, on homes prior to sale, at any time without notice or obligation. Completion dates are subject to final permits being received. Square footage and dimensions are approximate and may vary in construction and depending on the standard of measurement used, engineering and municipal requirements, or other site-specific conditions. Not an offer or solicitation to sell real property. Thomas James Homes is a registered trademark of Thomas James Homes, LLC. ©2023 Thomas James Homes. All rights reserved. CA DRE License #02057367.





FIRST FLOOR



SECOND FLOOR



BED
4



BATH
4.5



SQFT
3,905



LOT SIZE
50' +



SALE PRICE
UPON REQUEST

PRELIMINARY

Southern California | tjh.com/build | [@thomasjameshomes](https://www.instagram.com/thomasjameshomes)

Home, pricing, and community information is subject to change, on homes prior to sale, at any time without notice or obligation. Completion dates are subject to final permits being received. Square footage and dimensions are approximate and may vary in construction and depending on the standard of measurement used, engineering and municipal requirements, or other site-specific conditions. Not an offer or solicitation to sell real property. Thomas James Homes is a registered trademark of Thomas James Homes, LLC. ©2023 Thomas James Homes. All rights reserved. CA DRE License #02057367.





THE PALISADE COLLECTION

Build a new home on your existing homesite with our
exclusively designed Palisade Collection.



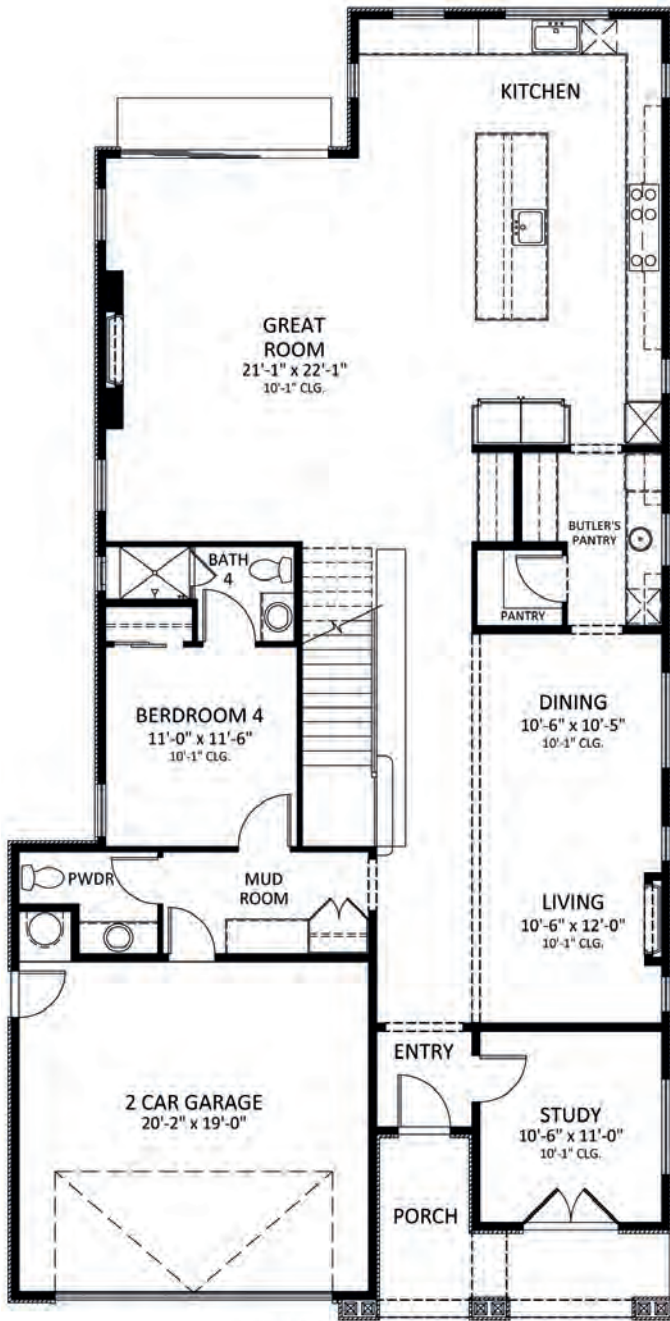
SPANISH ELEVATION

PRELIMINARY

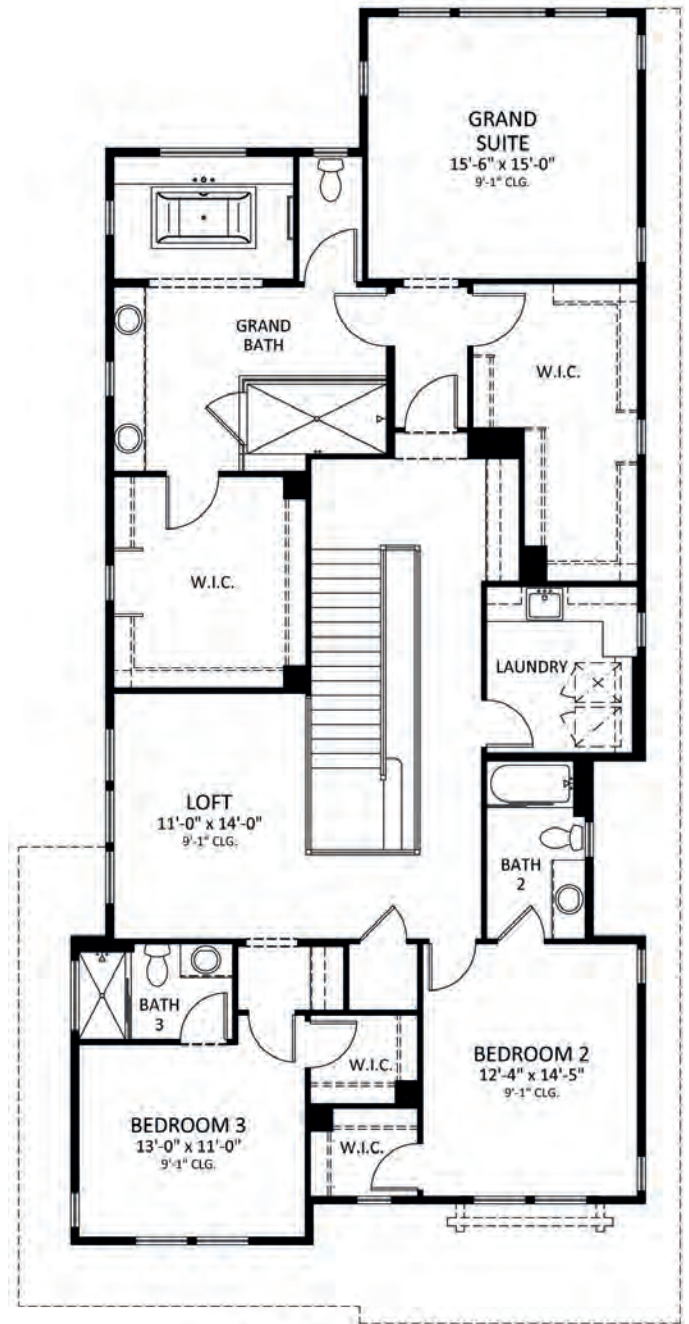
Southern California | tjh.com/build | [@thomasjameshomes](https://www.instagram.com/thomasjameshomes)

Home, pricing, and community information is subject to change, on homes prior to sale, at any time without notice or obligation. Completion dates are subject to final permits being received. Square footage and dimensions are approximate and may vary in construction and depending on the standard of measurement used, engineering and municipal requirements, or other site-specific conditions. Not an offer or solicitation to sell real property. Thomas James Homes is a registered trademark of Thomas James Homes, LLC. ©2023 Thomas James Homes. All rights reserved. CA DRE License #02057367.





FIRST FLOOR



SECOND FLOOR



BED
4



BATH
4.5



SQFT
3,905



LOT SIZE
50' +



SALE PRICE
UPON REQUEST

PRELIMINARY

Southern California | tjh.com/build | [@thomasjameshomes](https://www.instagram.com/thomasjameshomes)

Home, pricing, and community information is subject to change, on homes prior to sale, at any time without notice or obligation. Completion dates are subject to final permits being received. Square footage and dimensions are approximate and may vary in construction and depending on the standard of measurement used, engineering and municipal requirements, or other site-specific conditions. Not an offer or solicitation to sell real property. Thomas James Homes is a registered trademark of Thomas James Homes, LLC. ©2023 Thomas James Homes. All rights reserved. CA DRE License #02057367.





THE PALISADE COLLECTION

Build a new home on your existing homesite with our
exclusively designed Palisade Collection.



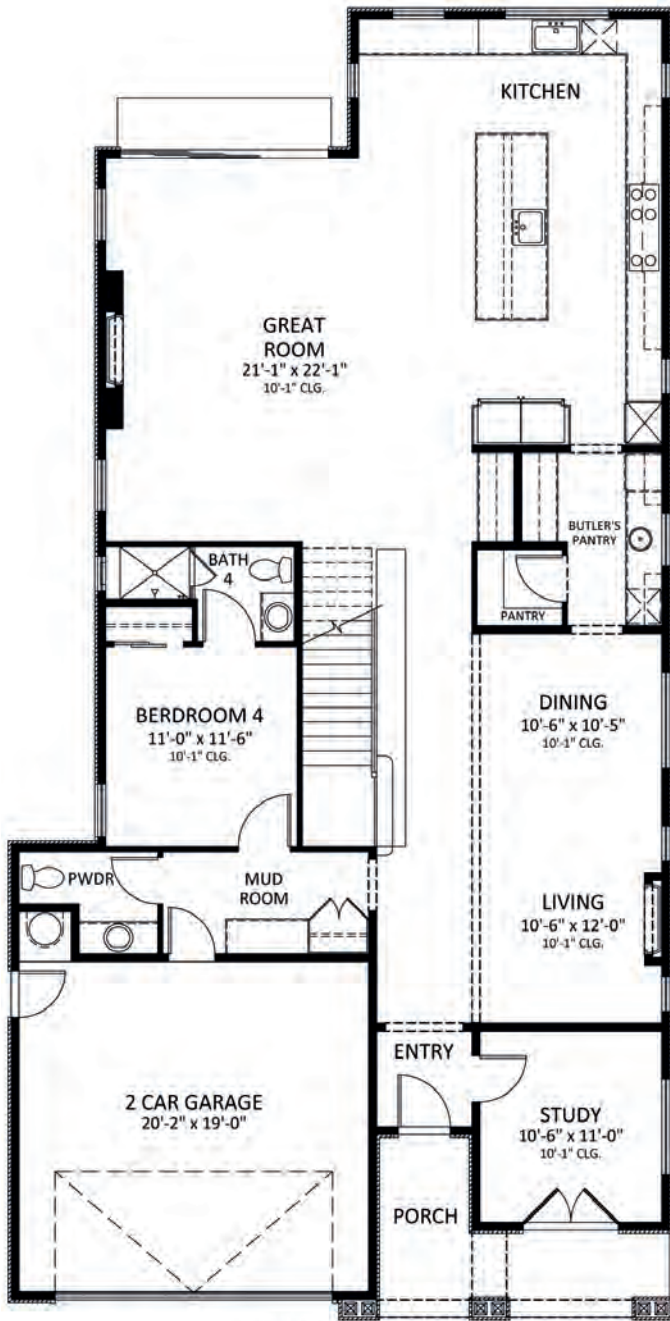
COASTAL ELEVATION

PRELIMINARY

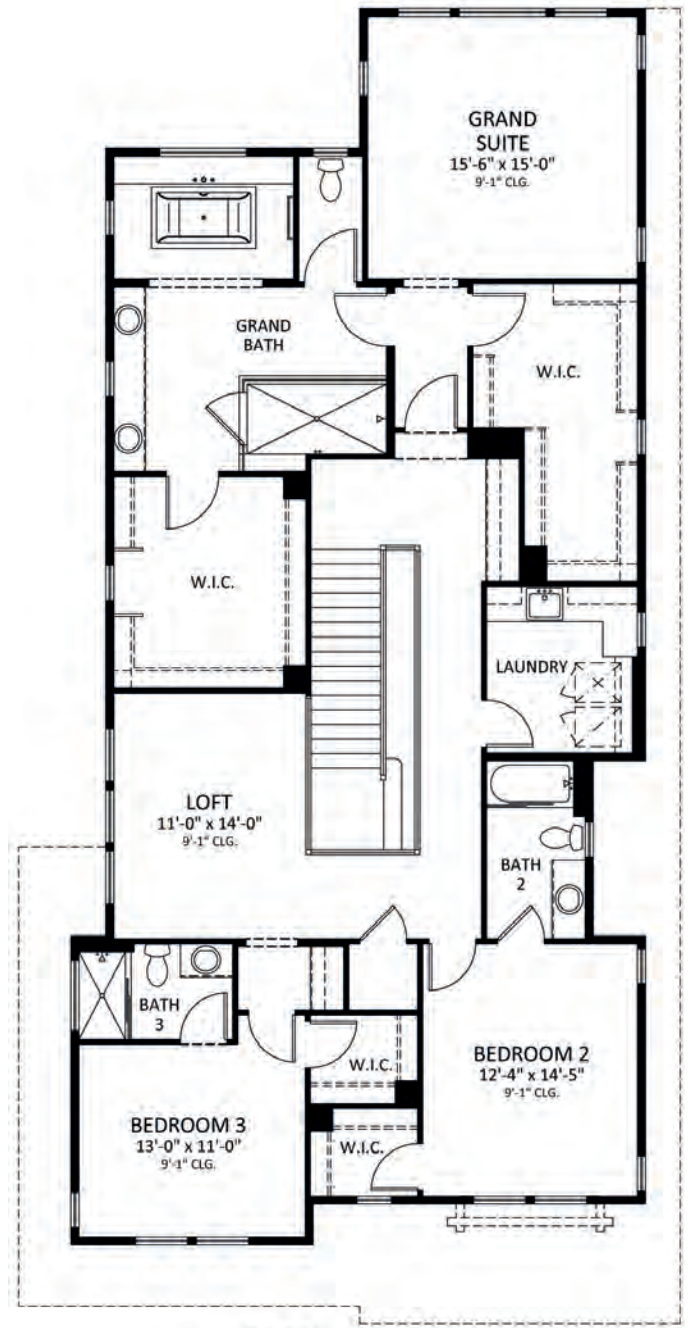
Southern California | tjh.com/build | [@thomasjameshomes](https://www.instagram.com/thomasjameshomes)

Home, pricing, and community information is subject to change, on homes prior to sale, at any time without notice or obligation. Completion dates are subject to final permits being received. Square footage and dimensions are approximate and may vary in construction and depending on the standard of measurement used, engineering and municipal requirements, or other site-specific conditions. Not an offer or solicitation to sell real property. Thomas James Homes is a registered trademark of Thomas James Homes, LLC. ©2023 Thomas James Homes. All rights reserved. CA DRE License #02057367.





FIRST FLOOR



SECOND FLOOR



BED
4



BATH
4.5



SQFT
3,905



LOT SIZE
50' +



SALE PRICE
UPON REQUEST

PRELIMINARY

Southern California | tjh.com/build | [@thomasjameshomes](https://www.instagram.com/thomasjameshomes)

Home, pricing, and community information is subject to change, on homes prior to sale, at any time without notice or obligation. Completion dates are subject to final permits being received. Square footage and dimensions are approximate and may vary in construction and depending on the standard of measurement used, engineering and municipal requirements, or other site-specific conditions. Not an offer or solicitation to sell real property. Thomas James Homes is a registered trademark of Thomas James Homes, LLC. ©2023 Thomas James Homes. All rights reserved. CA DRE License #02057367.





THE PALISADE COLLECTION

Build a new home on your existing homesite with our
exclusively designed Palisade Collection.



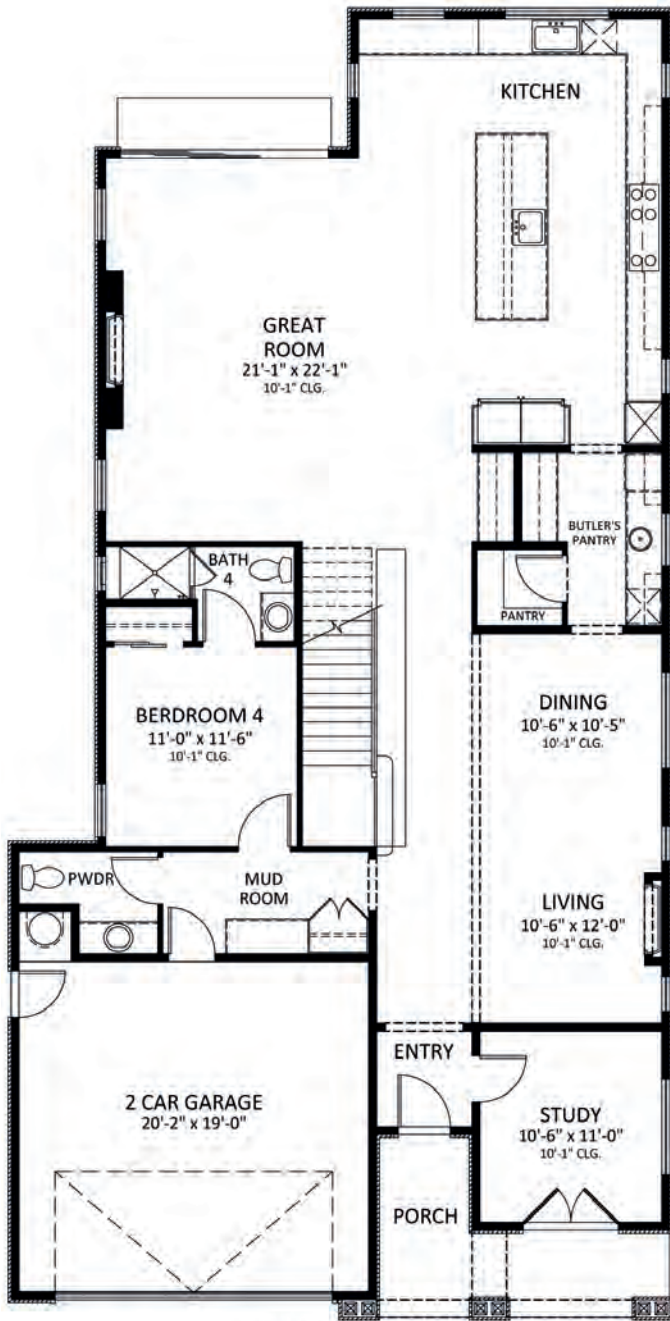
FARMHOUSE ELEVATION

PRELIMINARY

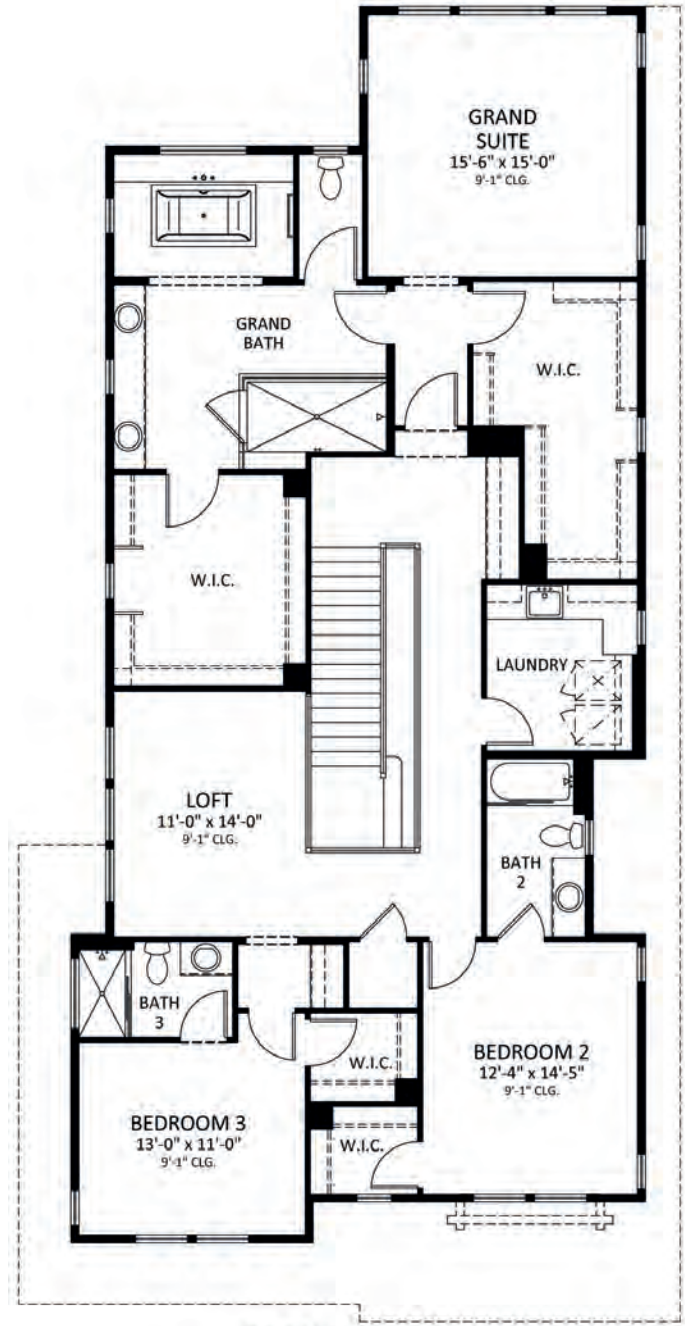
Southern California | tjh.com/build | [@thomasjameshomes](https://www.instagram.com/thomasjameshomes)

Home, pricing, and community information is subject to change, on homes prior to sale, at any time without notice or obligation. Completion dates are subject to final permits being received. Square footage and dimensions are approximate and may vary in construction and depending on the standard of measurement used, engineering and municipal requirements, or other site-specific conditions. Not an offer or solicitation to sell real property. Thomas James Homes is a registered trademark of Thomas James Homes, LLC. ©2023 Thomas James Homes. All rights reserved. CA DRE License #02057367.





FIRST FLOOR



SECOND FLOOR



BED
4



BATH
4.5



SQFT
3,905



LOT SIZE
50' +



SALE PRICE
UPON REQUEST

PRELIMINARY

Southern California | tjh.com/build | [@thomasjameshomes](https://www.instagram.com/thomasjameshomes)

Home, pricing, and community information is subject to change, on homes prior to sale, at any time without notice or obligation. Completion dates are subject to final permits being received. Square footage and dimensions are approximate and may vary in construction and depending on the standard of measurement used, engineering and municipal requirements, or other site-specific conditions. Not an offer or solicitation to sell real property. Thomas James Homes is a registered trademark of Thomas James Homes, LLC. ©2023 Thomas James Homes. All rights reserved. CA DRE License #02057367.





THE MYRTLE COLLECTION

Build a new home on your existing homesite with our exclusively designed Myrtle Collection.



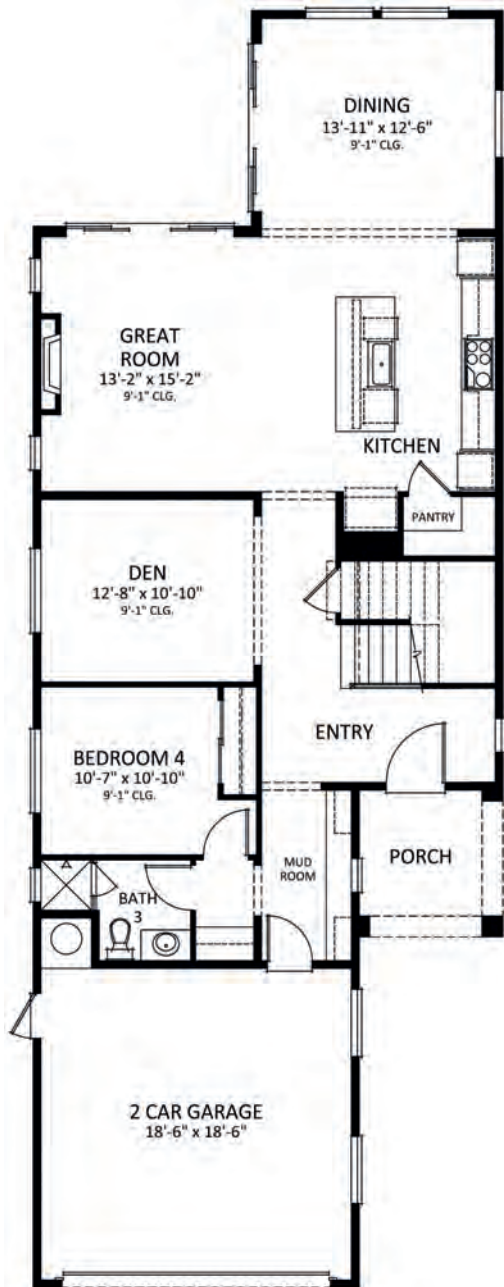
SPANISH ELEVATION

PRELIMINARY

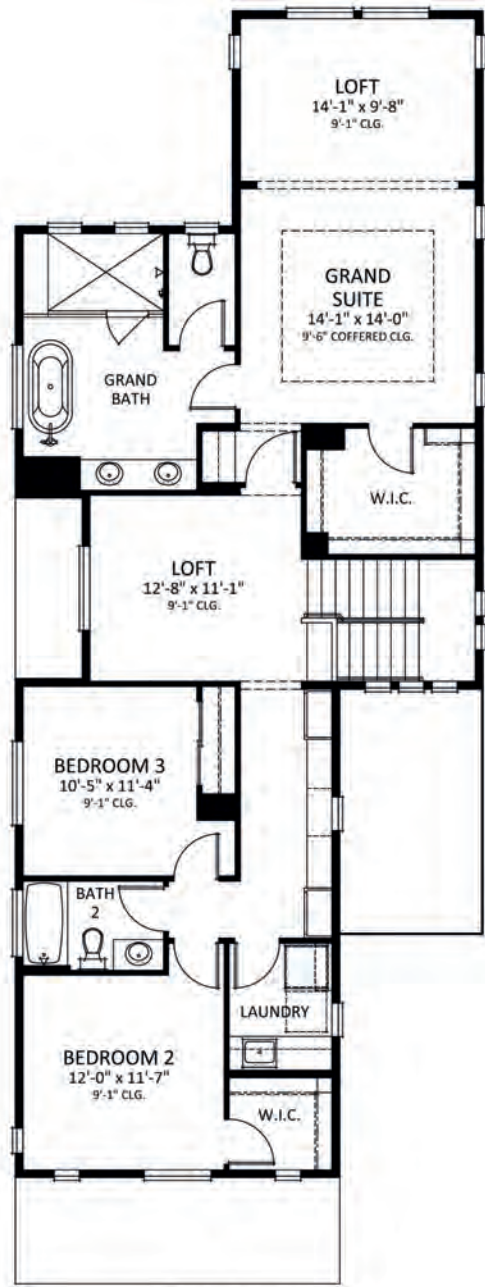
Southern California | tjh.com/build | [@thomasjameshomes](https://www.instagram.com/thomasjameshomes)

Home, pricing, and community information is subject to change, on homes prior to sale, at any time without notice or obligation. Completion dates are subject to final permits being received. Square footage and dimensions are approximate and may vary in construction and depending on the standard of measurement used, engineering and municipal requirements, or other site-specific conditions. Not an offer or solicitation to sell real property. Thomas James Homes is a registered trademark of Thomas James Homes, LLC. ©2023 Thomas James Homes. All rights reserved. CA DRE License #02057367.





FIRST FLOOR



SECOND FLOOR



BED
4



BATH
3



SQFT
2,745



LOT SIZE
40' +



SALE PRICE
UPON REQUEST

PRELIMINARY

Southern California | tjh.com/build | [@thomasjameshomes](https://www.instagram.com/thomasjameshomes)

Home, pricing, and community information is subject to change, on homes prior to sale, at any time without notice or obligation. Completion dates are subject to final permits being received. Square footage and dimensions are approximate and may vary in construction and depending on the standard of measurement used, engineering and municipal requirements, or other site-specific conditions. Not an offer or solicitation to sell real property. Thomas James Homes is a registered trademark of Thomas James Homes, LLC. ©2023 Thomas James Homes. All rights reserved. CA DRE License #02057367.





THE MYRTLE COLLECTION

Build a new home on your existing homesite with our
exclusively designed Myrtle Collection.



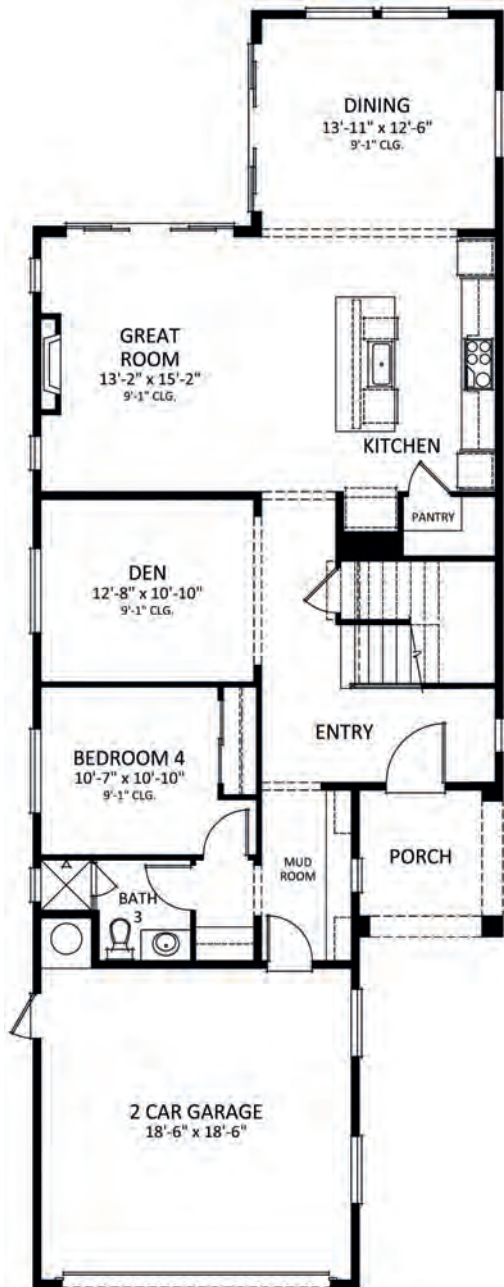
FARMHOUSE ELEVATION

PRELIMINARY

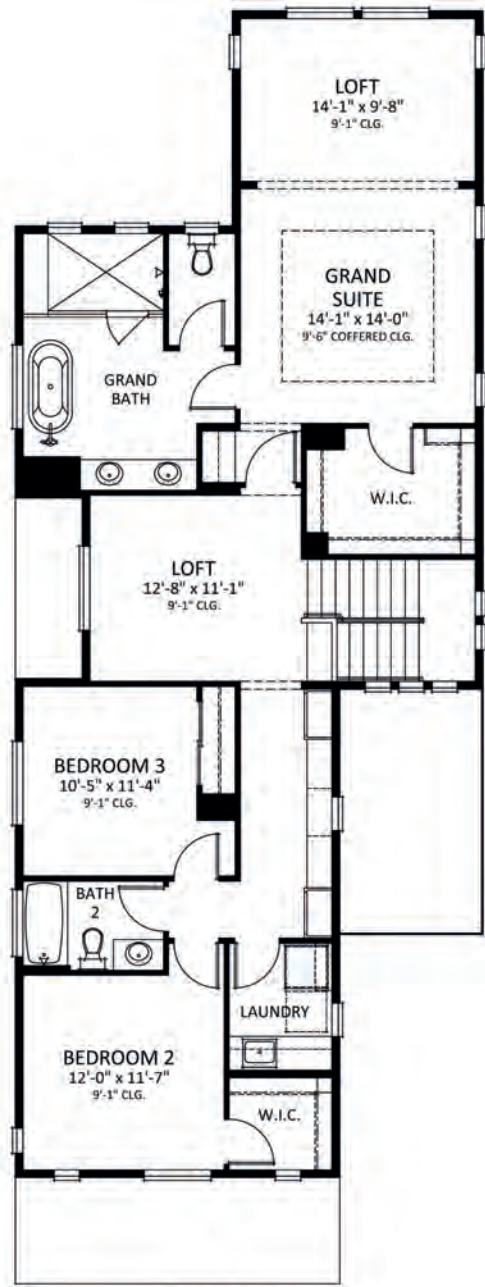
Southern California | tjh.com/build | [@thomasjameshomes](https://www.instagram.com/thomasjameshomes)

Home, pricing, and community information is subject to change, on homes prior to sale, at any time without notice or obligation. Completion dates are subject to final permits being received. Square footage and dimensions are approximate and may vary in construction and depending on the standard of measurement used, engineering and municipal requirements, or other site-specific conditions. Not an offer or solicitation to sell real property. Thomas James Homes is a registered trademark of Thomas James Homes, LLC. ©2023 Thomas James Homes. All rights reserved. CA DRE License #02057367.





FIRST FLOOR



SECOND FLOOR



BED
4



BATH
3



SQFT
2,745



LOT SIZE
40' +



SALE PRICE
UPON REQUEST

PRELIMINARY

Southern California | tjh.com/build | [@thomasjameshomes](https://www.instagram.com/thomasjameshomes)

Home, pricing, and community information is subject to change, on homes prior to sale, at any time without notice or obligation. Completion dates are subject to final permits being received. Square footage and dimensions are approximate and may vary in construction and depending on the standard of measurement used, engineering and municipal requirements, or other site-specific conditions. Not an offer or solicitation to sell real property. Thomas James Homes is a registered trademark of Thomas James Homes, LLC. ©2023 Thomas James Homes. All rights reserved. CA DRE License #02057367.





THE HAWTHORNE COLLECTION

Build a new home on your existing homesite with our
exclusively designed Hawthorne Collection.



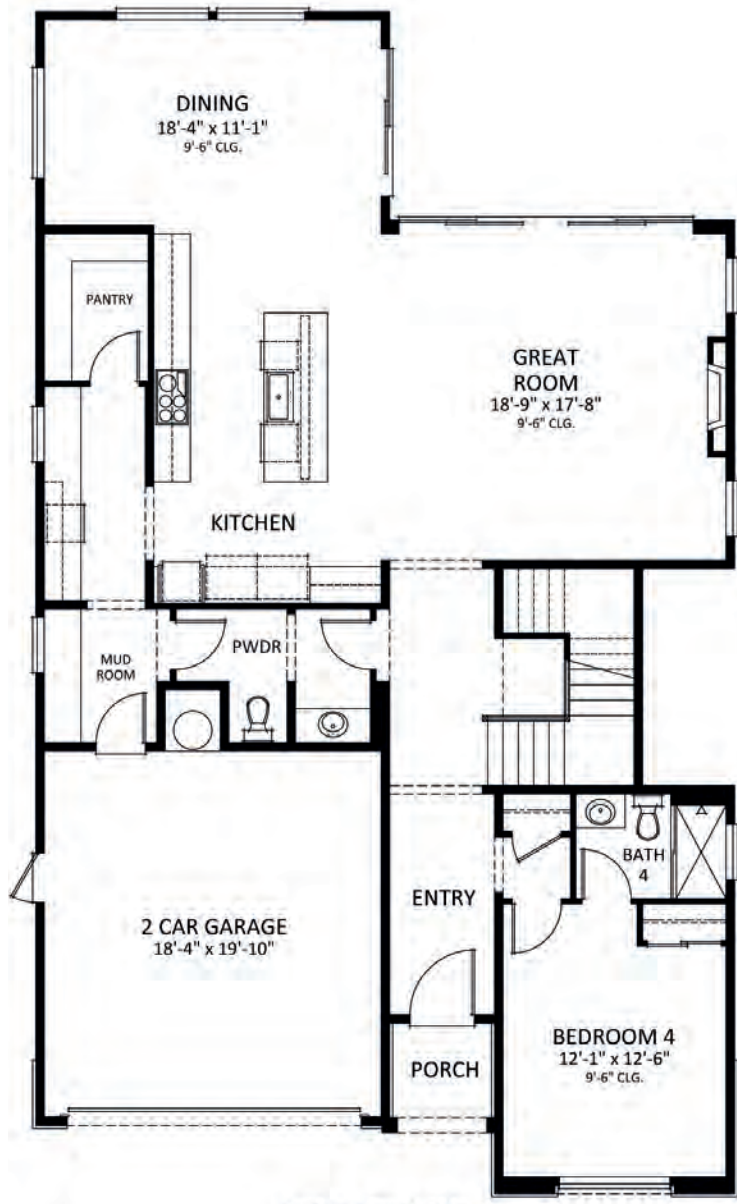
TRADITIONAL ELEVATION

PRELIMINARY

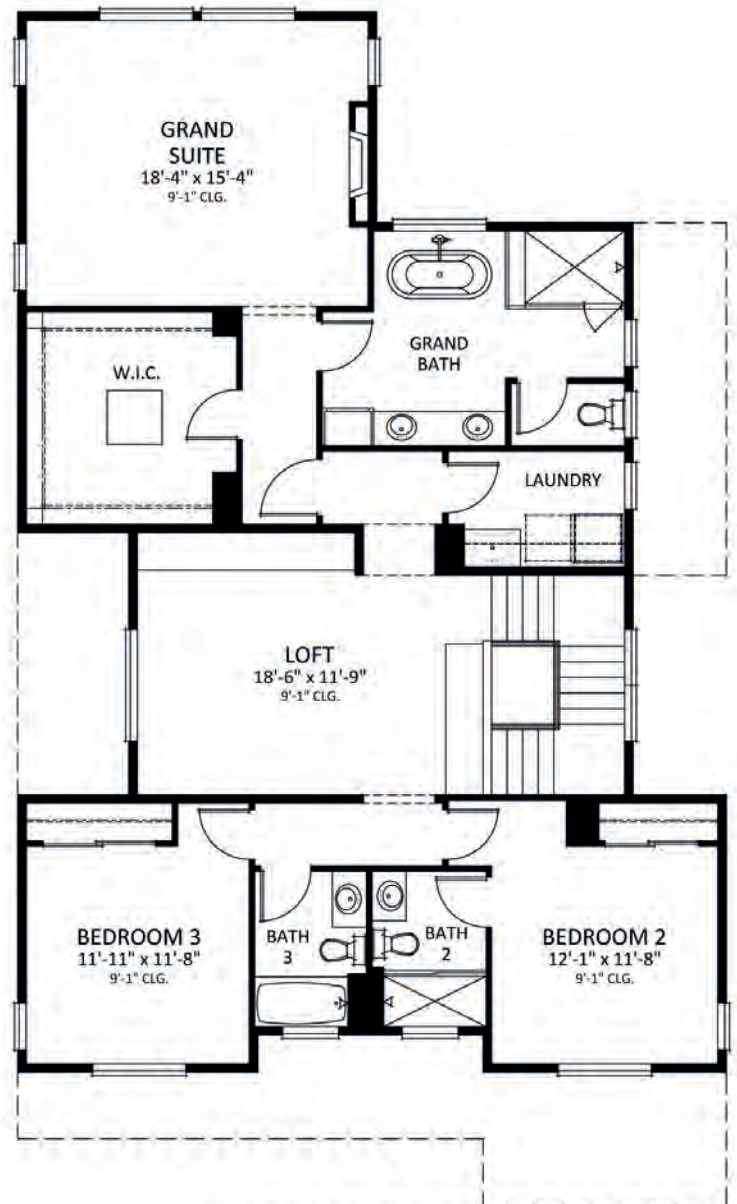
Southern California | tjh.com/build | [@thomasjameshomes](https://www.instagram.com/thomasjameshomes)

Home, pricing, and community information is subject to change, on homes prior to sale, at any time without notice or obligation. Completion dates are subject to final permits being received. Square footage and dimensions are approximate and may vary in construction and depending on the standard of measurement used, engineering and municipal requirements, or other site-specific conditions. Not an offer or solicitation to sell real property. Thomas James Homes is a registered trademark of Thomas James Homes, LLC. ©2023 Thomas James Homes. All rights reserved. CA DRE License #02057367.





FIRST FLOOR



SECOND FLOOR



BED
4



BATH
4.5



SQFT
3,240



LOT SIZE
50' +



SALE PRICE
UPON REQUEST

PRELIMINARY

Southern California | tjh.com/build | [@thomasjameshomes](https://www.instagram.com/thomasjameshomes)

Home, pricing, and community information is subject to change, on homes prior to sale, at any time without notice or obligation. Completion dates are subject to final permits being received. Square footage and dimensions are approximate and may vary in construction and depending on the standard of measurement used, engineering and municipal requirements, or other site-specific conditions. Not an offer or solicitation to sell real property. Thomas James Homes is a registered trademark of Thomas James Homes, LLC. ©2023 Thomas James Homes. All rights reserved. CA DRE License #02057367.





THE HAWTHORNE COLLECTION

Build a new home on your existing homesite with our
exclusively designed Hawthorne Collection.



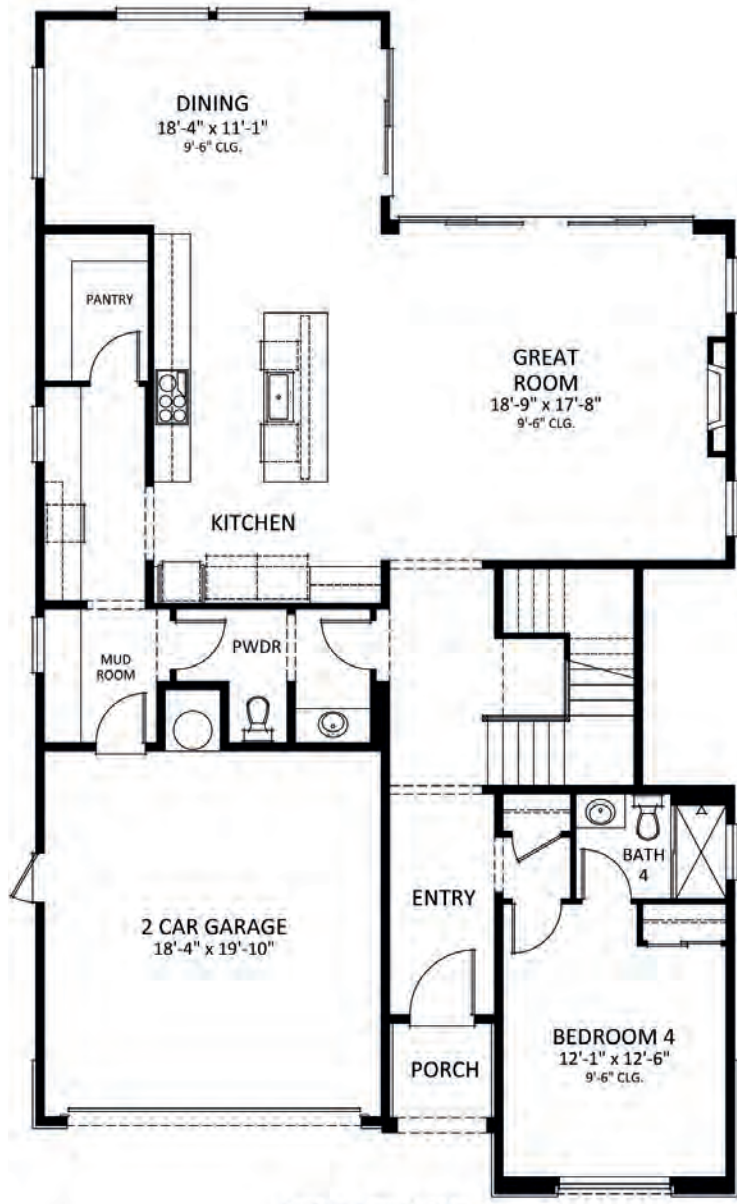
SPANISH ELEVATION

PRELIMINARY

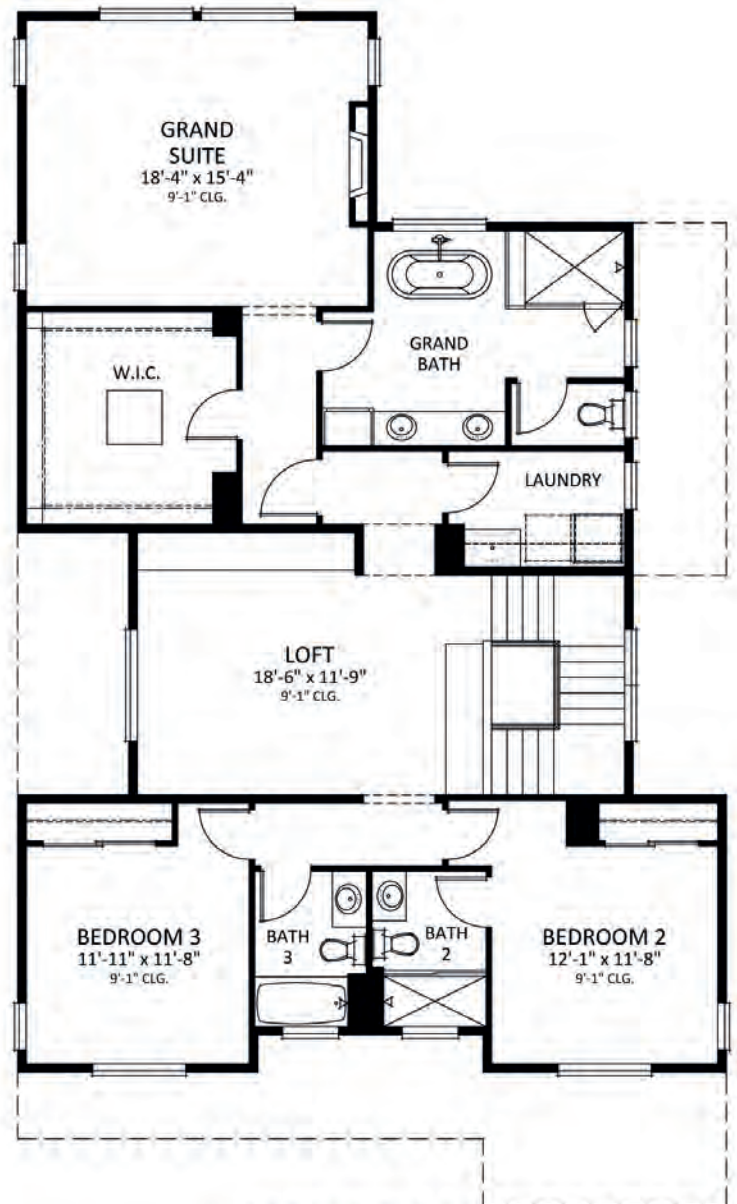
Southern California | tjh.com/build | [@thomasjameshomes](https://www.instagram.com/thomasjameshomes)

Home, pricing, and community information is subject to change, on homes prior to sale, at any time without notice or obligation. Completion dates are subject to final permits being received. Square footage and dimensions are approximate and may vary in construction and depending on the standard of measurement used, engineering and municipal requirements, or other site-specific conditions. Not an offer or solicitation to sell real property. Thomas James Homes is a registered trademark of Thomas James Homes, LLC. ©2023 Thomas James Homes. All rights reserved. CA DRE License #02057367.





FIRST FLOOR



SECOND FLOOR



BED
4



BATH
4.5



SQFT
3,240



LOT SIZE
50' +



SALE PRICE
UPON REQUEST

PRELIMINARY

Southern California | tjh.com/build | [@thomasjameshomes](https://www.instagram.com/thomasjameshomes)

Home, pricing, and community information is subject to change, on homes prior to sale, at any time without notice or obligation. Completion dates are subject to final permits being received. Square footage and dimensions are approximate and may vary in construction and depending on the standard of measurement used, engineering and municipal requirements, or other site-specific conditions. Not an offer or solicitation to sell real property. Thomas James Homes is a registered trademark of Thomas James Homes, LLC. ©2023 Thomas James Homes. All rights reserved. CA DRE License #02057367.





THE HAWTHORNE COLLECTION

Build a new home on your existing homesite with our
exclusively designed Hawthorne Collection.



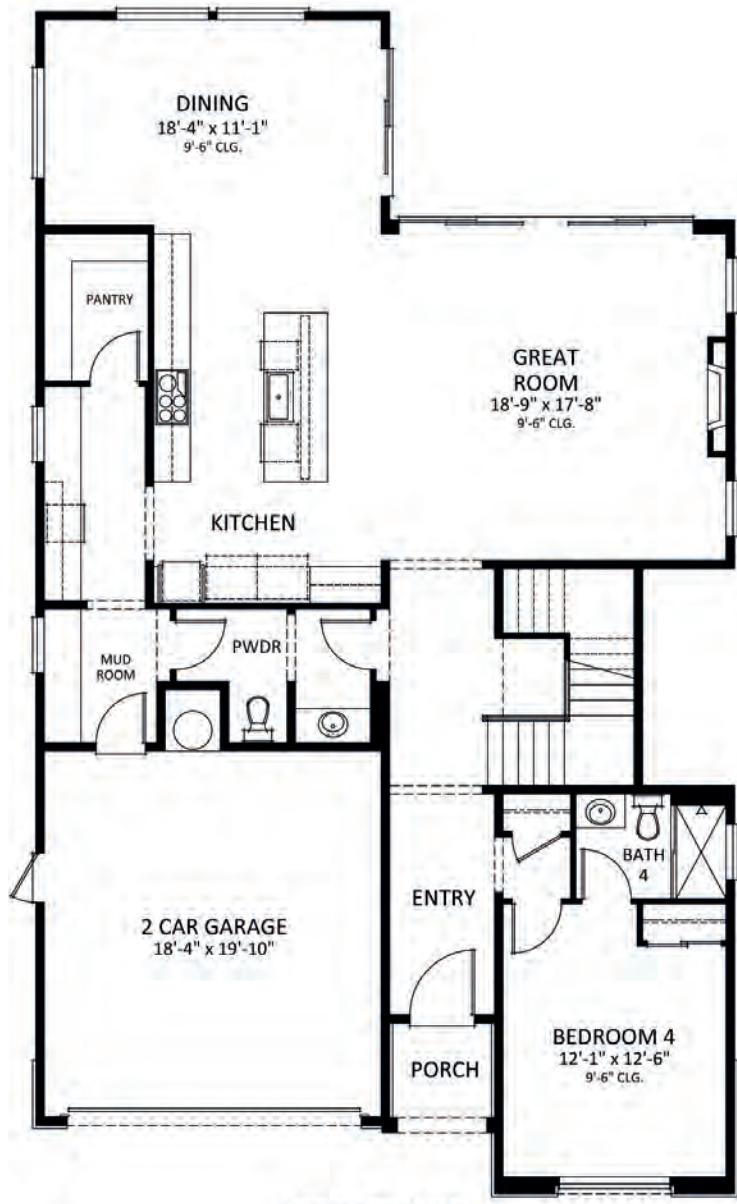
TRANSITIONAL ELEVATION

PRELIMINARY

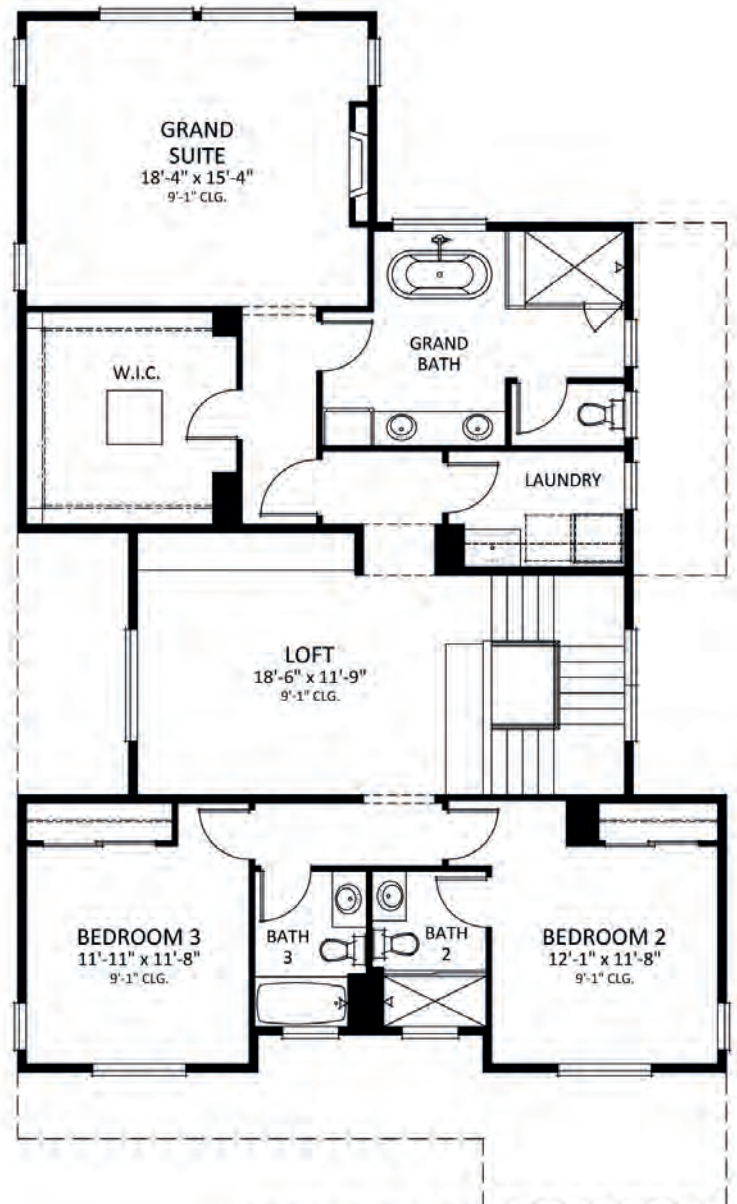
Southern California | tjh.com/build | [@thomasjameshomes](https://www.instagram.com/thomasjameshomes)

Home, pricing, and community information is subject to change, on homes prior to sale, at any time without notice or obligation. Completion dates are subject to final permits being received. Square footage and dimensions are approximate and may vary in construction and depending on the standard of measurement used, engineering and municipal requirements, or other site-specific conditions. Not an offer or solicitation to sell real property. Thomas James Homes is a registered trademark of Thomas James Homes, LLC. ©2023 Thomas James Homes. All rights reserved. CA DRE License #02057367.





FIRST FLOOR



SECOND FLOOR



BED
4



BATH
4.5



SQFT
3,240



LOT SIZE
50' +



SALE PRICE
UPON REQUEST

PRELIMINARY

Southern California | tjh.com/build | [@thomasjameshomes](https://www.instagram.com/thomasjameshomes)

Home, pricing, and community information is subject to change, on homes prior to sale, at any time without notice or obligation. Completion dates are subject to final permits being received. Square footage and dimensions are approximate and may vary in construction and depending on the standard of measurement used, engineering and municipal requirements, or other site-specific conditions. Not an offer or solicitation to sell real property. Thomas James Homes is a registered trademark of Thomas James Homes, LLC. ©2023 Thomas James Homes. All rights reserved. CA DRE License #02057367.





PLAN 2880

WISTERIA

LOT SIZE
50' +

HOME SQ. FT.
2,887

BEDS
4

BATHS
4



SPANISH OPTION AVAILABLE*

PRELIMINARY

*Completion dates are subject to final permits being received. Home, pricing, and community information is subject to change, on homes prior to sale, at any time without notice or obligation. Square footages and dimensions are approximate and may vary in construction and depending on the standard of measurement used, engineering and municipal requirements, or other site-specific conditions. Not an offer or solicitation to sell real property. Thomas James Homes is a registered trademark of Thomas James Homes, LLC. ©2023 Thomas James Homes. All rights reserved. [LICENSE #02057367.]





PLAN 2880

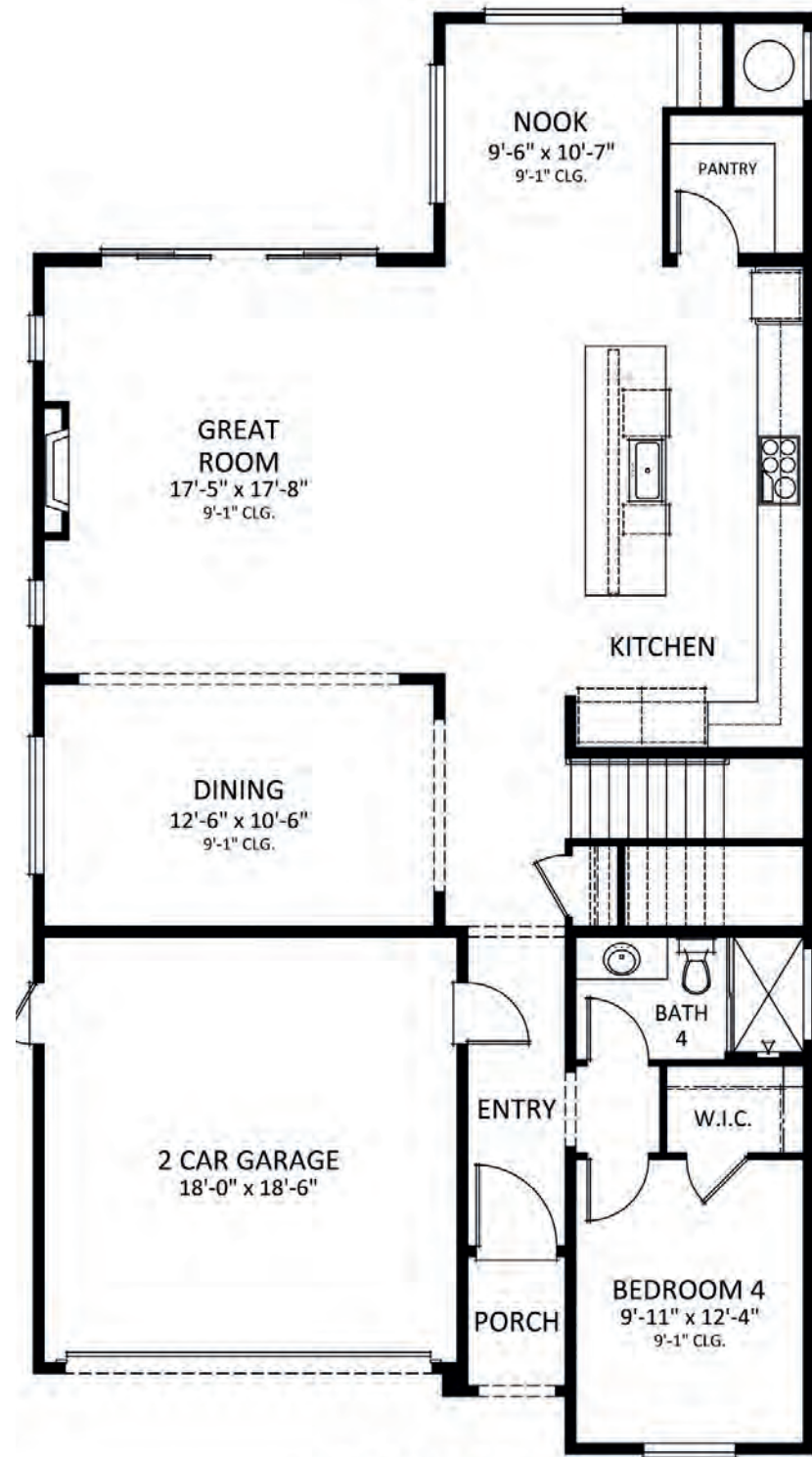
WISTERIA

LOT SIZE
50' +

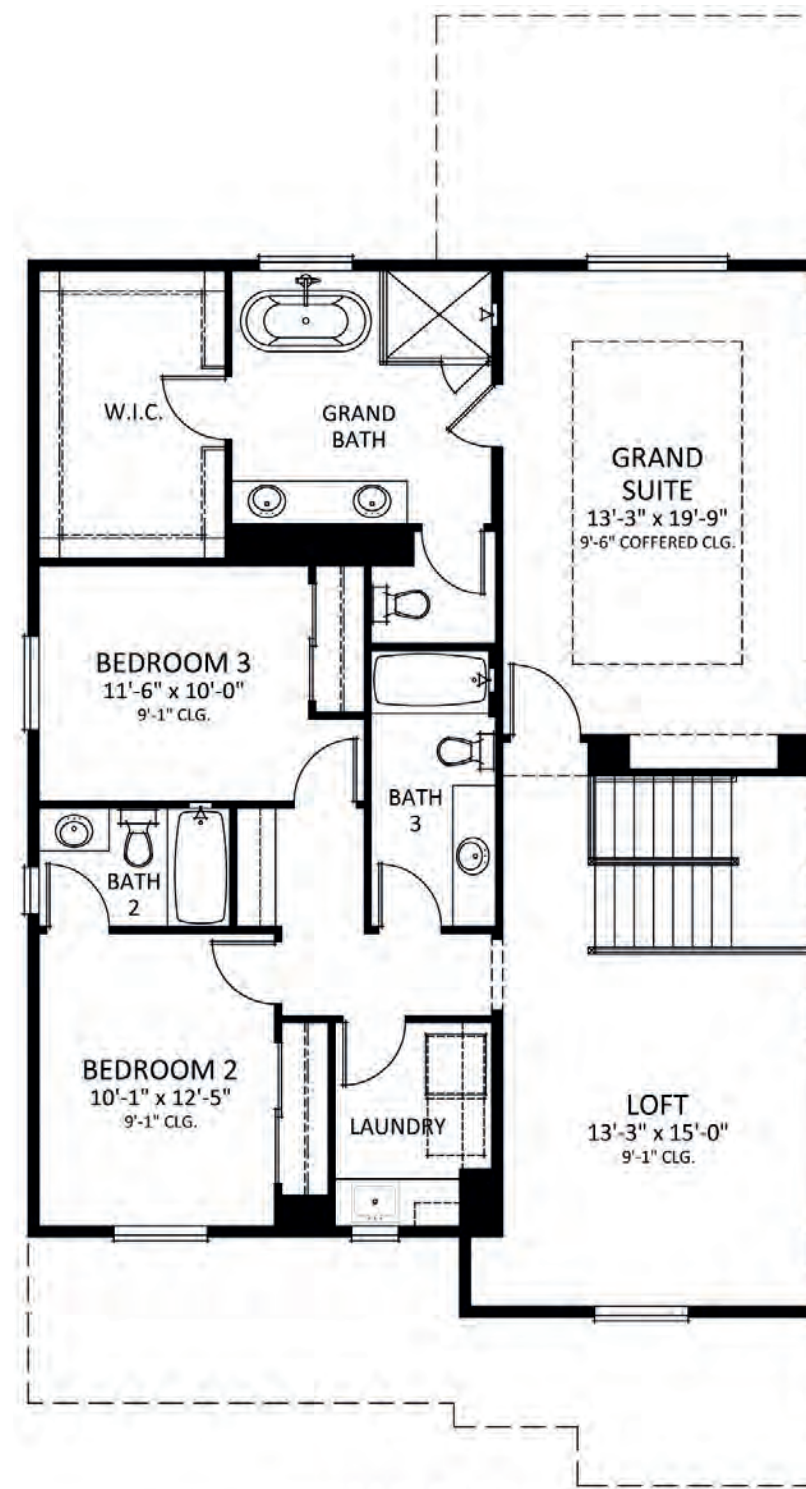
HOME SQ. FT.
2,887

BEDS
4

BATHS
4



FIRST FLOOR



SECOND FLOOR





PLAN 2355

OJAI



SPANISH OPTION AVAILABLE*

PRELIMINARY

*Completion dates are subject to final permits being received. Home, pricing, and community information is subject to change, on homes prior to sale, at any time without notice or obligation. Square footages and dimensions are approximate and may vary in construction and depending on the standard of measurement used, engineering and municipal requirements, or other site-specific conditions. Not an offer or solicitation to sell real property. Thomas James Homes is a registered trademark of Thomas James Homes, LLC. ©2023 Thomas James Homes. All rights reserved. [LICENSE #02057367.]





PLAN 2355

OJAI



PRELIMINARY

*Completion dates are subject to final permits being received. Home, pricing, and community information is subject to change, on homes prior to sale, at any time without notice or obligation. Square footages and dimensions are approximate and may vary in construction and depending on the standard of measurement used, engineering and municipal requirements, or other site-specific conditions. Not an offer or solicitation to sell real property. Thomas James Homes is a registered trademark of Thomas James Homes, LLC. ©2023 Thomas James Homes. All rights reserved. [LICENSE #02057367.]

